

**Mission<sup>®</sup>**



**HA-360 3-Diff**

**Automatic Hematology Analyzer**



**21 Parameters**



**3-Part  
Differential WBC**



**Internal Thermal  
Printer**



**High Accuracy  
and Reliability**

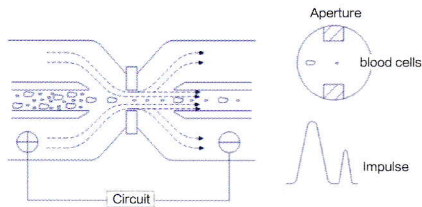


**Large Display  
Screen**

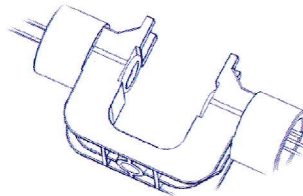
# Mission® HA-360 3-Diff Automatic Hematology Analyzer

## Innovative Technology

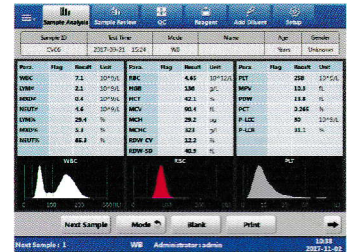
- The Sheath Flow Impedance Method for RBCs/PLTs counting
- LED and receiver tube fully integrated: Improve the stability of HGB
- Performs rapid and accurate analysis of 21 parameters



The Sheath Flow Impedance Method



LED and Receiver Tube fully integrated



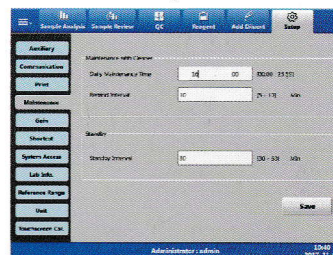
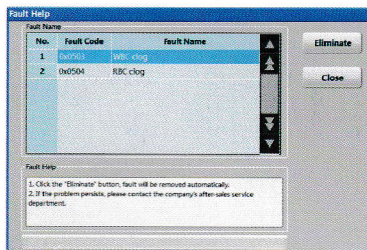
Sample Analysis

## High Accuracy and Reliability

- Proven technology for accuracy of results
- Linearity to support clinical diagnostics and monitoring

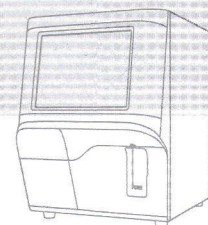
## Easy Operation and Maintenance

- Intuitive software menus
- Barcoded reagent management
- Comprehensive QC information
- Eliminate the fault automatically
- Daily maintenance time reminder: Convenient for daily work



## Safe and Secure

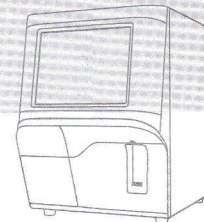
- Non-toxic, biodegradable reagent system
- Two basic reagents (diluent and lyse) for complete results



# HA-360 SPECIFICATIONS

<b>Principles &amp; Technologies</b>	<b>WBC:</b> Impedance Method <b>RBC, PLT:</b> Sheath Flow Impedance Method <b>HGB:</b> Colorimetric Method
<b>Parameters</b>	<b>Whole Blood (WB) and Pre-Dilute (PD) Mode; 21 parameters</b> WBC; LYM#; MXD#; NEUT#; LYM%; MXD%; NEUT%; RBC; HGB; HCT; MCV; MCH; MCHC; RDW-CV; RDW-SD; PLT; MPV; PDW; PCT; P-LCR; P-LCC;
<b>Histogram</b>	<b>WBC (3-Part Differential), RBC, PLT</b>
<b>Throughput</b>	<b>Whole Blood Mode:</b> ≥60 samples/hour <b>Pre-Dilute Mode:</b> ≥50 samples/hour
<b>Sample Volume</b>	<b>WB Mode:</b> ≤14 µL <b>PD Mode:</b> ≤20 µL
<b>Linearity</b>	<b>WBC</b> 1.0 – 99.9 10 <sup>9</sup> /L <b>RBC</b> 0.3 – 7.0 10 <sup>12</sup> /L <b>HGB</b> 20 – 280 g/L <b>HCT</b> 10 – 60% <b>PLT</b> 20 – 999 10 <sup>9</sup> /L
<b>Data Storage</b>	<b>50,000 complete sample results with histograms</b>
<b>Screen Type</b>	<b>10.4" LCD color touch screen</b>
<b>Quality Control</b>	<b>2 QC programs: L-J QC and X-Mean QC</b> <b>15 QC files</b>
<b>Peripheral Options</b>	<b>Internal Thermal Printer (include)</b> <b>Optional External Printer (not include)</b> <b>Serial Port (RS-232)</b> <b>LAN (TCP/IP)</b> <b>4 USB Ports</b>
<b>Reagents</b>	<b>HA-3D Hematology Diluent</b> <b>HA-3D Hematology Lyse</b>
<b>Power Source</b>	<b>100-240 V~; 50/60 Hz; 300 VA</b>
<b>Store and Shipping Conditions</b>	<b>-10-40°C; 10-90% Relative Humidity; 50-106 kPa</b>
<b>Operating Conditions</b>	<b>15-30°C; 30-85% Relative Humidity; 70-106 kPa</b>
<b>Dimensions</b>	<b>340 mm x 465 mm x 425 mm</b>
<b>Weight</b>	<b>≤27 kg</b>

CE marked for sale in the European Community



## ORDERING INFORMATION

Product Name	Catalog No.	Components	Kit Box Dimensions (L x W x H)	Carton Dimensions (L x W x H)	Number of Kits/Carton
HA-360 3-Diff Automatic Hematology Analyzer	C111-9011	1 HA-360 Analyzer 1 Quick Reference Guide 1 Power Cord 1 Instruction Manual	610 x 485 x 660 mm		1
Cyto-Diluent	C121-9011	1 Barrel (20 L/Barrel)	318 x 311 x 270 mm		1
Cyto-Lyser	C121-9021	3 Bottles (500 mL/Bottle)	248 x 86 x 166 mm	463 x 270 x 208 mm	5
Mi-Po Cleaner	C121-9031	1 Bottle (50 mL/Bottle)	44 x 44 x 88 mm	485 x 255 x 233 mm	100



We also offer other rapid diagnostic and medical products for:

**Blood Glucose, Lateral flow, POCT Products, Immunoassay, Molecular Diagnostics and more.**

**Contact us for worldwide distribution and custom manufacturing (OEM) opportunities**

✓ CE Marked for sale in the European Community



All right reserved. Programs and Specifications subject to changes without prior notice, please contact local distributors.



aconlabs.com

ACON Laboratories, Inc.  
10125 Mesa Rim Road, San Diego, CA 92121, U.S.A.  
Tél : 1.858.875.8000  
Fax : 1.858.200.0729  
E-mail : info@aconlabs.com